

13.02.26

www.shaftesbury.leicester.sch.uk

SHAFTESBURY NEWS



CHARACTER VALUE OF THE WEEK: EXPLORATION

"Exploration is really the essence of the human spirit." — Frank Borman

HALF-TERM

School will be closed for half-term from Monday 16th February to Friday 20th February.

It will re-open on Monday 23rd February.

Have a lovely half-term week all!

**International Mother Language Day
21st February**

This year's theme is youth voice on multi-lingual education. We speak over 40 languages here at Shaftesbury; try and use greetings in your own language, or a language learnt from our Language of the Month to celebrate.

Why it matters—home languages are a connection to our culture, heritage and community.

In Chinese culture, the lion symbolizes **power, wisdom and superiority**. Lion dances are performed at Chinese festivals or big occasions to bring good fortune and chase away evil spirits.



GUNG HAY FAT CHOI

Thank you to Derek Frearson and members of the Tai Chi and Chinese Martial Arts Society for coming into Shaftesbury to perform the traditional Lion Dance to celebrate Chinese New Year with us.

Also thanks to FANS who have paid for and organised this event.

13.02.26

SHAFTESBURY NEWS

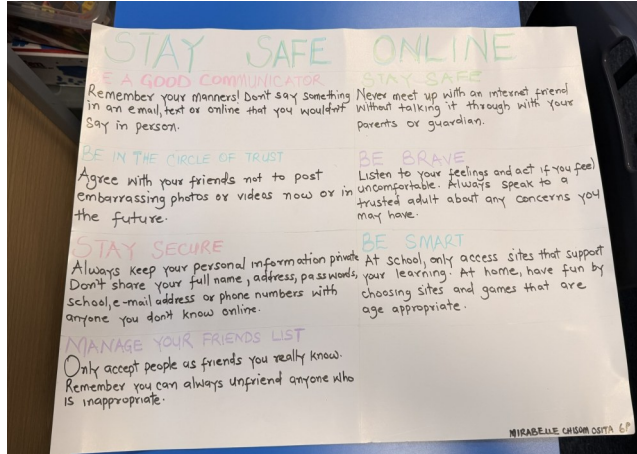
www.shaftesbury.leicester.sch.uk



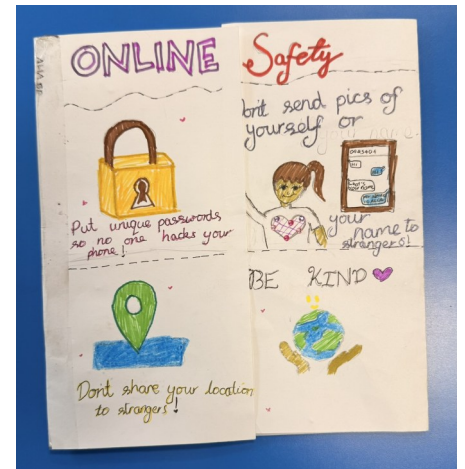
Safer Internet Day

This week we celebrated **Safer Internet Day**, and our children took part in thoughtful discussions about the safe and responsible use of the internet, including how to use AI safely. They explored why it is important to question what we see online and to think critically about the information we encounter.

As part of the week, we held an Online Safety Poster Competition with two sections: one from the child's perspective – *How I can keep myself safe online* – and one from the adult's perspective – *How I can keep my child safe online*. We were delighted with the number of entries and the creativity and care shown in each one. It was incredibly difficult to choose our winners!



1st prize Mirabelle and Flourish —6P and 4K



2nd prize Alina—5P

A big thank you to everyone who took part. Remember, staying safe online isn't just for one day – it's a lifelong learning journey for us all!

Respect SJS Shaftesbury Junior School

SCHOLASTIC TRAVELLING BOOKS

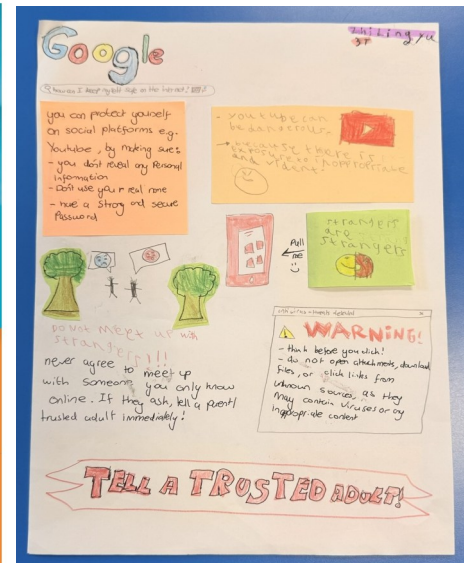
Every book you buy earns **FREE BOOKS** for our school!

COME TO OUR BOOK FAIR

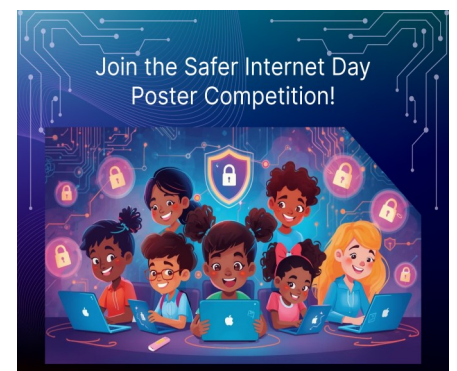
AND FIND YOUR NEXT FAVOURITE READ!

Use your World Book Day voucher at the book fair!

Wednesday 25th February	3:05pm to 3:45pm
Thursday 26th February	3:05pm to 3:45pm
Friday 27th February	3:05pm to 3:45pm
Monday 2nd March	3:05pm to 3:45pm
Tuesday 3rd March	3:05pm to 3:45pm



3rd prize Zhi-Ling 3T



13.02.26

SHAFTESBURY NEWS

www.shaftesbury.leicester.sch.uk



Leicester Community Safety Partnership

Dear Parents and Guardians

Leicestershire Police and Leicester City Council are committed to working together to address the root cause of crime and antisocial behaviour in our city. As part of this commitment, we collaborate closely with schools, community partners and families to develop effective strategies to respond to incidents and prevent harm before it occurs.



We are reaching out to you today to seek your support in safeguarding our young people, particularly at the end of each school term, when we have observed an increase in risky behaviours among children and young people.

On 20 December 2024, the final day of the Autumn term for most city schools, approximately 500 children and young people gathered in the city centre during the afternoon. This appears to have been a coordinated activity arranged via social media.

Many of the young people involved were identifiable by their school uniforms, with the majority believed to be from local secondary schools.

While similar gatherings have occurred in the past, the scale of this event was unprecedented. The levels of antisocial behaviour were deeply concerning, including significant disruption to businesses and people visiting the city centre, damage to police vehicles, and multiple incidents occurred requiring police intervention.

These incidents included two assaults on police officers, a sexual assault on a child, a breach of the peace, and several other assaults involving young people. At one point, the situation escalated to such an extent that a police dispersal order was necessary, and over 40 officers were deployed to restore order.

We are sure you will agree that this kind of behaviour is unacceptable. Not only does it risk drawing young people into criminal activity, but it also significantly increases the likelihood of them becoming victims of crime themselves.

To prevent a recurrence of such incidents, Leicestershire Police, Leicester City Council, and school leaders across the city and county are asking for your support. Together, we can help ensure the safety and wellbeing of our young people by:

1. Having open conversations with your children about the risks associated with antisocial behaviour and the potential consequences of being involved in such activities.
2. Noting school finishing times on the last day of term and ensuring you know where your children are during this period.
3. Encouraging participation in alternative activities – Whether organised, informal or by accessing the range of facilities across the city, please highlight the opportunities to undertake positive activities out of school.

Our children and young people are a vital part of our community, and we want to support their freedom to enjoy the city in a safe and appropriate manner.

By working together, we can ensure that the events of December 2024 are not repeated and that our young people continue to thrive in a positive and secure environment. Thank you for your cooperation and commitment to keeping our city safe place to live work and visit.

<https://youtu.be/9LKOpxZ-Hc> Watch here for a message from the Police.

13.02.26

SHAFTESBURY NEWS

www.shaftesbury.leicester.sch.uk



Expanding School uniform life span by mending and repurposing practices.

Researchers Details: Jekaterina Samsonova p2727901@my365.dmu.ac.uk

This survey investigates school uniform life management.

In this survey, you are asked to answer questions related to used school uniform maintaining routines and it's end-of-life management. The survey will take about 5 minutes to complete. There are no risks involved in this study. Your data will remain anonymous in all published work resulting from the study.

Participation in this research study is voluntary. You may withdraw at any time by exiting the study; if you do so before submitting your answers, your data will not be saved.

* Indicates required question

By clicking on the box below and proceeding to the task, you certify that you have read this form and agreed to participate in accordance with the above conditions.

Please click on this link: [Expanding School uniform life span by mending and repurposing practices. docs.google.com](https://docs.google.com)

Schools Out! School's Out is a free holiday club run by One Church. It's for kids aged 5-11 (F-Yr6). This Feb half term, join us for crafts, sports, games, activities, surprises, songs, snacks, stories & something for every child to enjoy!

Monday 16th Feb OADBURY	Brookside School Copse Close LE2 4FU	10AM ➤ 12PM
Monday 16th Feb BRAUNSTONE	The Oak Centre Bendbow Rise LE3 1QA	2PM ➤ 4PM
Tuesday 17th Feb LOUGHBOROUGH	Charnwood School of Dance 11 Wharncliffe Rd LE11 1SN	10AM ➤ 11.30AM
Tuesday 17th Feb B.LEYS	B.Leys School Anstey Lane LE4 0FL	2PM ➤ 4PM
Wednesday 18th Feb FROG ISLAND	One Church 10 Frog Island LE3 5AG	10AM ➤ 12PM
Wednesday 18th Feb FROG ISLAND	One Church 10 Frog Island LE3 5AG	2PM ➤ 4PM

We have 6 events taking place in 5 venues. On Wednesday, join us for the morning, afternoon... or both!

FREE ENTRY - No Booking Required
REGISTER On The Door
QUESTIONS? kids@onechurch.org.uk
Scan for a map of all locations

Year 5 Ancient Greek film premiere

Y5 parents are cordially invited to the premiere of Year 5's film 'Ancient Greeks'

2.40pm in Shaftesbury Junior School Hall

Tuesday 24th February

13.02.26

www.shaftesbury.leicester.sch.uk

SHAFTESBURY NEWS



WEEKLY AWARDS AND ATTENDANCE

CLASS ATTENDANCE

3J: 93.0%
 3T: 96.7%
 4K: 96.0%
 4W: 96.6%
 5G: 94.6%
 5P: 96.1%
 6P: 98.4%
 6S: 95.8%

Overall Attendance from
 28.08.25 - 13.02.26:

TOP ATTENDANCE: 6P 98.4%
 PUNCTUALITY: 4W
 LUNCHTIME: 6S

HOUSE POINTS

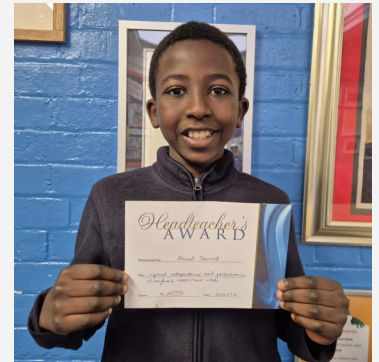
1st: Cranmer 129
 2nd: Latimer 231
 3rd: Tyndale 186
 4th: Ridley 212

WEEKLY HEADTEACHER AWARDS

Every week, two pupils from a year group are chosen for an outstanding piece of work. This is our celebration of their efforts. WELL DONE!



6P - Scarlette
 For showing great artistic and creative flair with her home-work



6S - Ahmed
 For improved independence and perseverance throughout assessment week

WOW AWARDS

3J: Elfa
 3T: Kaddie-Rae
 4K: Naeto
 4W: Ariana
 5G: Nicoleta
 5P: Amir
 6P: Nayab
 6S: Khaira

WE ❤️ LUNCHTIMES

Etienne 4K: Exploration
 Aiyana 4K: Self-motivation
 Jessie 5G: Kindness
 Adam 5G: Self-motivation
 Kaddie-Rae 3T: Self-confidence
 Tamim 6P: Kindness
 Jannat 5P: Acceptance
 Riana 4W: Sharing

TESCO COLOURING COMPETITION



Well done to Alina (5P) & Aiyana (4K) for winning the Tesco colouring competition.

READING MILES

